

Silver Series Wall Pack 13w



DESCRIPTION:

Touch-Plate's Wall Pack Lights were designed to offer better security, more lumens, and higher cost savings. Our Wall Pack Lights can offer energy savings of 70% or greater over traditional metal halide or high pressure sodium lighting. Our LEDs are optimal for new construction and retrofit installations.

PRODUCT FEATURES:

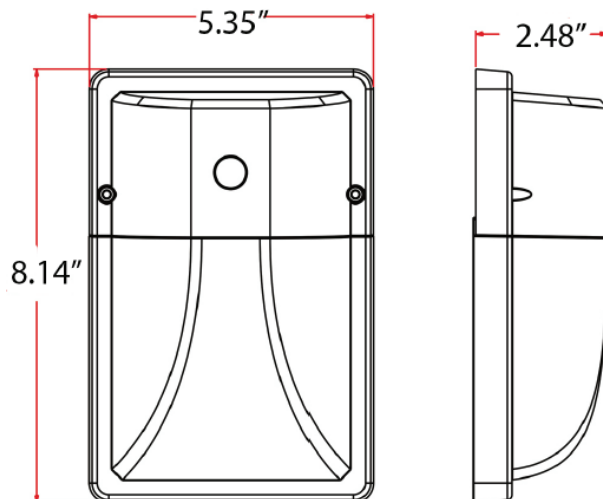
- Heavy-duty aluminum housing
- No flickering or humming
- Eco-friendly, no mercury
- Lifetime of 50,000 hrs or greater
- DLC Listed
 - ML-WPA13w
- 5 Year Limited Warranty

SPECIFICATIONS:

- Wattage: 13w
- Lumens: 1,600 (approx > 125lm/w)
- Equivalence: 80w and 100w HID/HPS/MH
- CRI: >80Ra
- IP Rating: IP65
- LED Chips: SMD
- PF: >0.90

PHYSICAL PARAMETERS:

- Dimensions
 - Length: 5.35"
 - Height: 8.14"
 - Depth: 2.48"
- Weight
 - 1.20 lbs

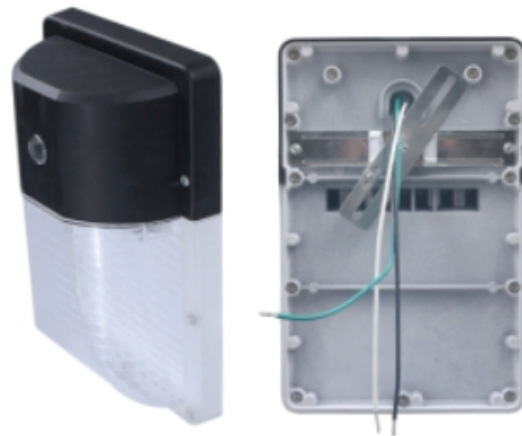


4822 Projects Drive Fort Wayne, IN 46825

P: 260.426.1565

E: ledsales@touchplate.com

www.ledlightingandcontrols.com



Silver Series Wall Pack

ORDERING GUIDE

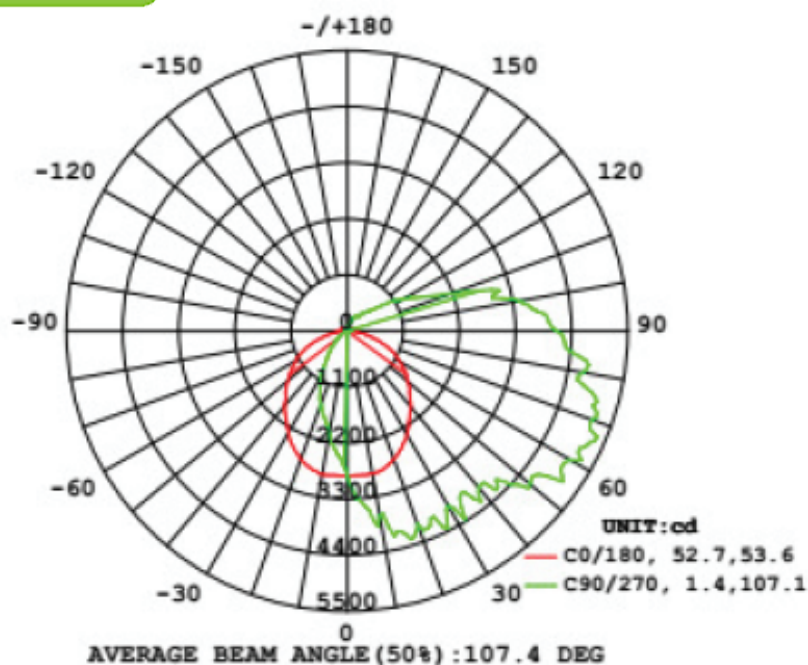
LED Type XXX -	Lumens - Wattage XXX - XXX	CCT -XX	Voltage X	
<ul style="list-style-type: none"> WPK Wall Pack 	<ul style="list-style-type: none"> 016-013 1,600lm - 13w 	<ul style="list-style-type: none"> 35 3500k 40 4000k 50 5000k 57 5700k 	<ul style="list-style-type: none"> U 120-277v 	

ACCESSORIES

(specified at time of order)

- Photocell Control

PHOTOMETRIC



Silver Series Wall Pack

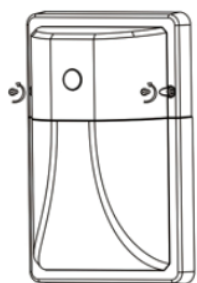
INSTALLATION INFORMATION (WIRING)

This product must be installed in accordance with National Electrical Code(NEC) and/or applicable local codes, by a qualified electrician.

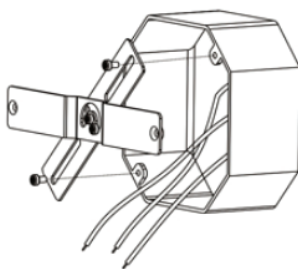
DANGER - RISK OF SHOCK - DISCONNECT POWER BEFORE INSTALLATION

- Make the necessary 'HOT' (Black or Brown), 'Neutral' (White or Blue), and 'Ground' (Green) connections in an approved junction box.

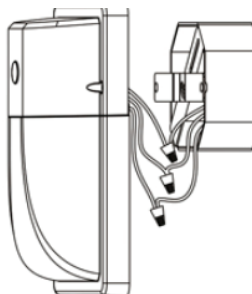
INSTALLATION INFORMATION



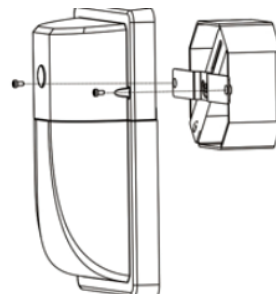
1. Install the cross screw



2. Install back plate to junction box



3. Connect wire



4. Install the fixture body and screw.